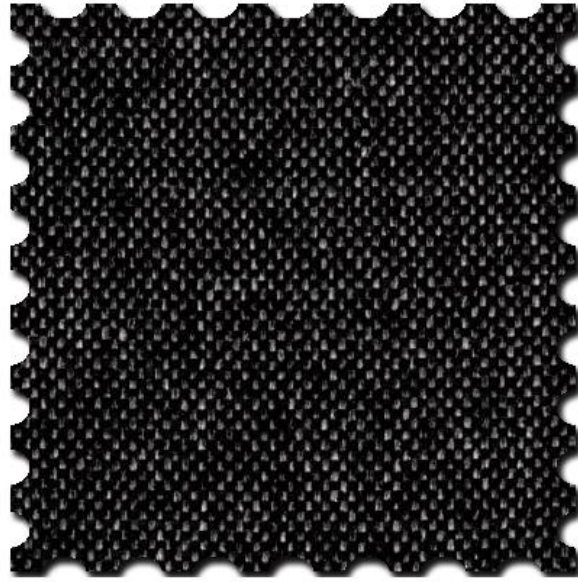




Material MINEO (Flachgewebe - dicker Stoff)



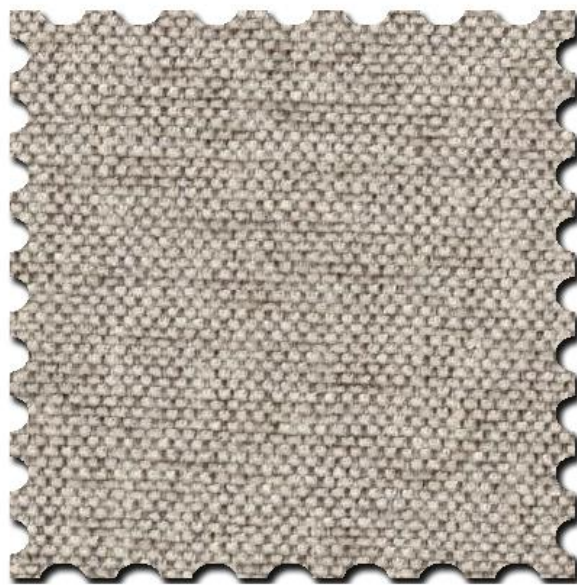
Braun



Schwarz



Grau



Beige



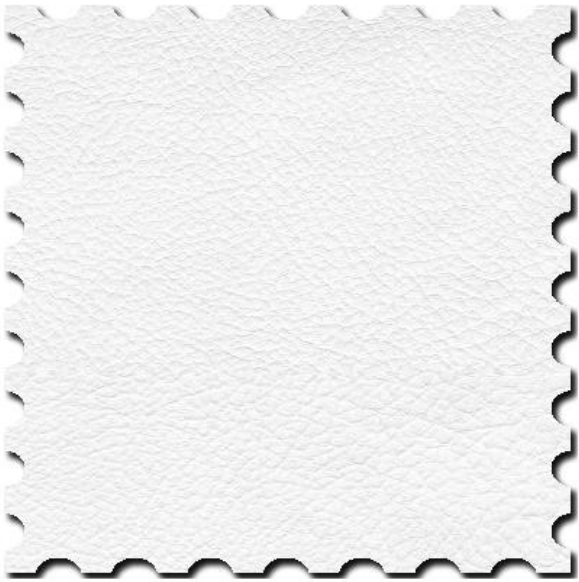
Hellbraun

Materialinformationen

- Martindale 100.000
- 100% POLYETHYLEN



Material NAPOLI (hochwertiges Textilleder)



Weiß



Mocca



Argent



Elephant



Schwarz



Rot

Materialinformationen

- Kunstleder
- Martindale 100.000
- 70% POLYESTER
- 30% BAUMWOLLE



Material CREMONA (Strukturstoff Uni)



Antracite



Linen



Mocca



Chocolate

Materialinformationen

- Martindale 70.000
- 60% POLYCARBONAT
- 40% POLYETHYLEN